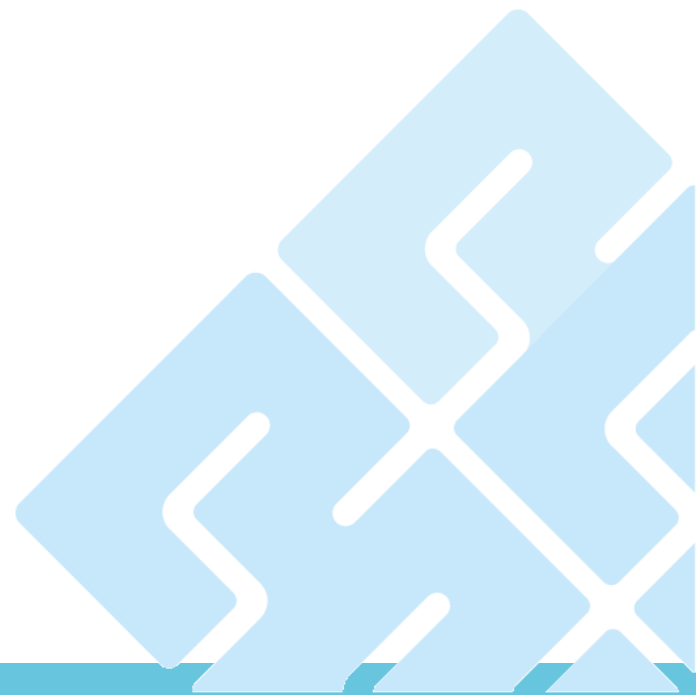




Chun Yuan Steel Industry Co., Ltd. Investor Conference 2026

May 25, 2026



The “forecast information” mentioned in this report is based on Chun Yuan observations and market information. The forward-looking information disclosed covers the company predict future operating profile, finance and performance.

The operating profile, finance and performance mentioned in this report is the actual consequence of operation. It could be differ from forecast information, which may be due to various factors, including but not limited to the market supply and demand, cost fluctuations, price competition, policies and legislations, Economic changes and other risks beyond the control of the company.

The content of the forecast information mentioned in this report responded to the situation at the time when information disclosed. There is any events or situation that occur after the disclosure date make the forecast information change, Chun Yuan will not undertake the responsibility and obligation to update the information.

I、About Our Company 3-11

II、Industry Analysis 12-21

III、Operating Performance 22-30

IV、Green Energy and Award Achievements 31-35

I、About Our Company

誠
意
勤
勉
信
心
負
責

Overview

- Domestic Business Divisions
- Regional Bases (Taiwan)
- Chun Yuan Steel Groups Building
- Subsidiary Business
- Regional Bases (China)

Sales Analysis

- Product
- Market



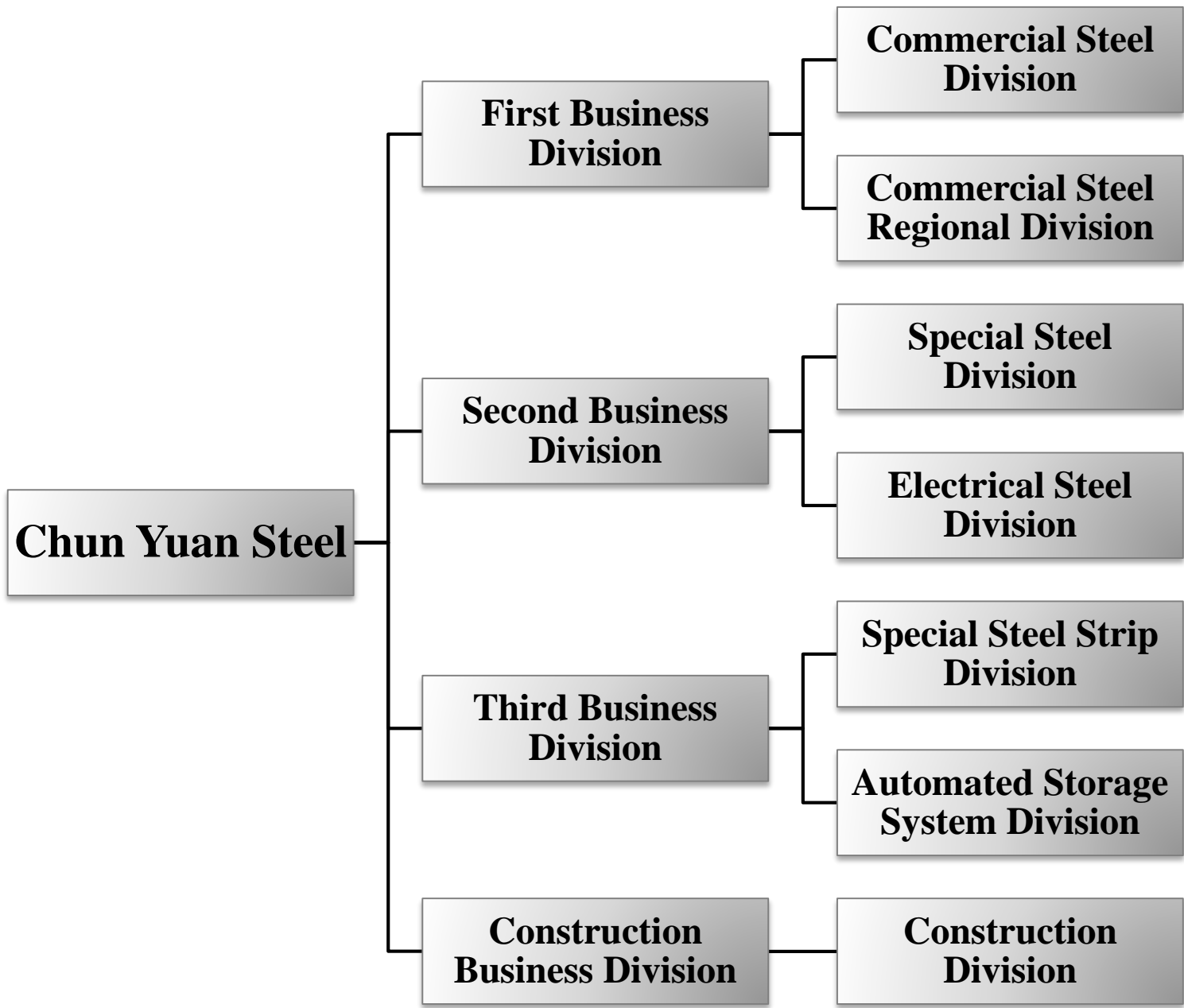
Established : 1965

Listed : 1989

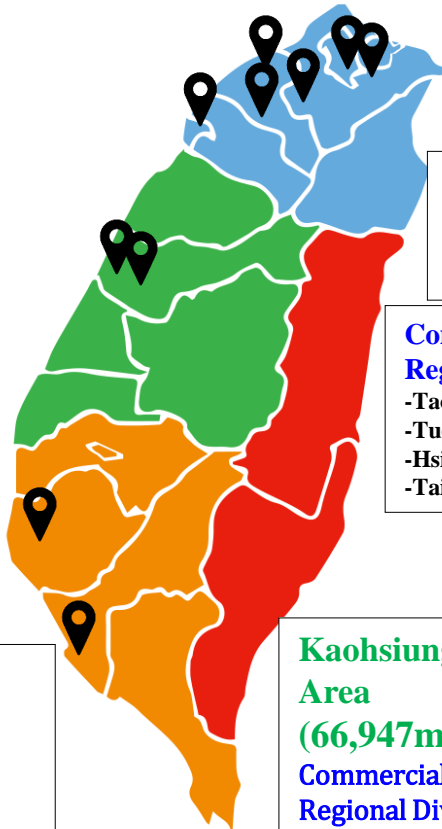
Capital : NTD 6.48 billion

Headcount : about 1, 543





Head Office



Longtan Plant Area
(269,534m²)
Special Steel Strip Division
-Rolling Plant
Automated Storage Division
-Storage Plant
Construction Division
-Steel Structure Plant
Special Steel Division
-Longtan Branch Office



Xizhi Plant Area
(41,363m²)
Commercial Steel Division
-Commercial Steel Xizhi Plant
Commercial Steel Regional Division
-Xizhi Branch Office



Special Steel Division
-Tucheng Branch Office
-Taichung Branch Office



Commercial Steel Regional Division
-Taoyuan Branch Office
-Tucheng Branch Office
-Hsinchu Branch Office
-Taichung Branch Office

Taichung Plant Area
(6,759m²)
Electrical Steel Division
-Sales Department
-Taichung Plant



Tainan Plant Area
(7,336m²)
Commercial Steel Regional Division
-Tainan Branch office
Special Steel Division
-Tainan Branch office

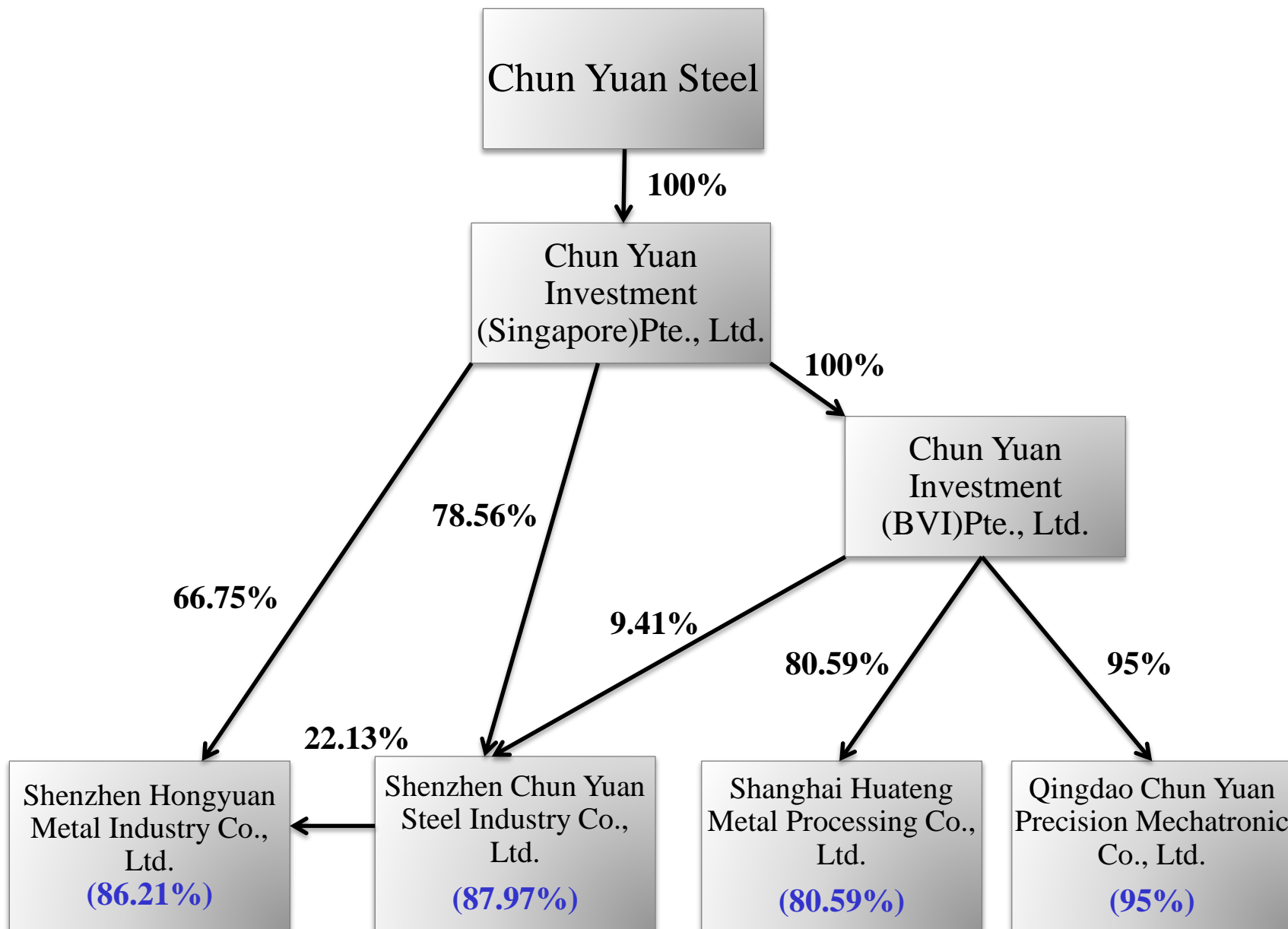


Kaohsiung Plant Area
(66,947m²)
Commercial Steel Regional Division
-Kaohsiung Plant
Construction Division
-Steel Structure Kaohsiung Plant Manufacturing Section 2
Special Steel Division
-Kaohsiung Branch Office



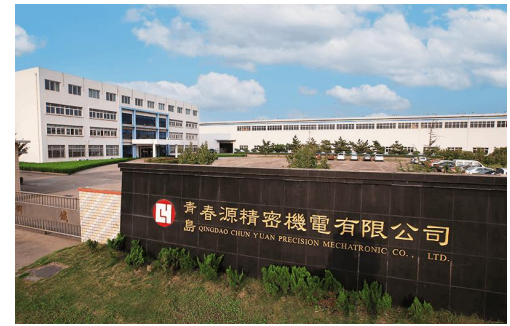


- **Site area : 2,805 m².**
- **Stories Plan : 15 stories aboveground, 3 stories underground.**
- **Address : No. 20, Ln. 61, Sec. 1, Guangfu Rd., Sanchong Dist., New Taipei City 241018, Taiwan.**
- **Floor Area : 19,754 m².**
- **Main structure of buildings : SRC .**
- **Project progress: The interior fit-out works are currently in the planning and execution phase. Scheduled for official opening in the second half of 2027.**

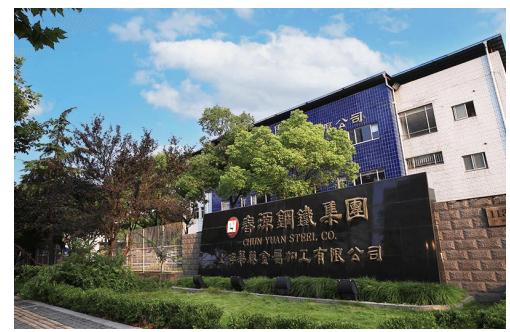




Qingdao Chun Yuan Precision Mechatronic Co., Ltd.



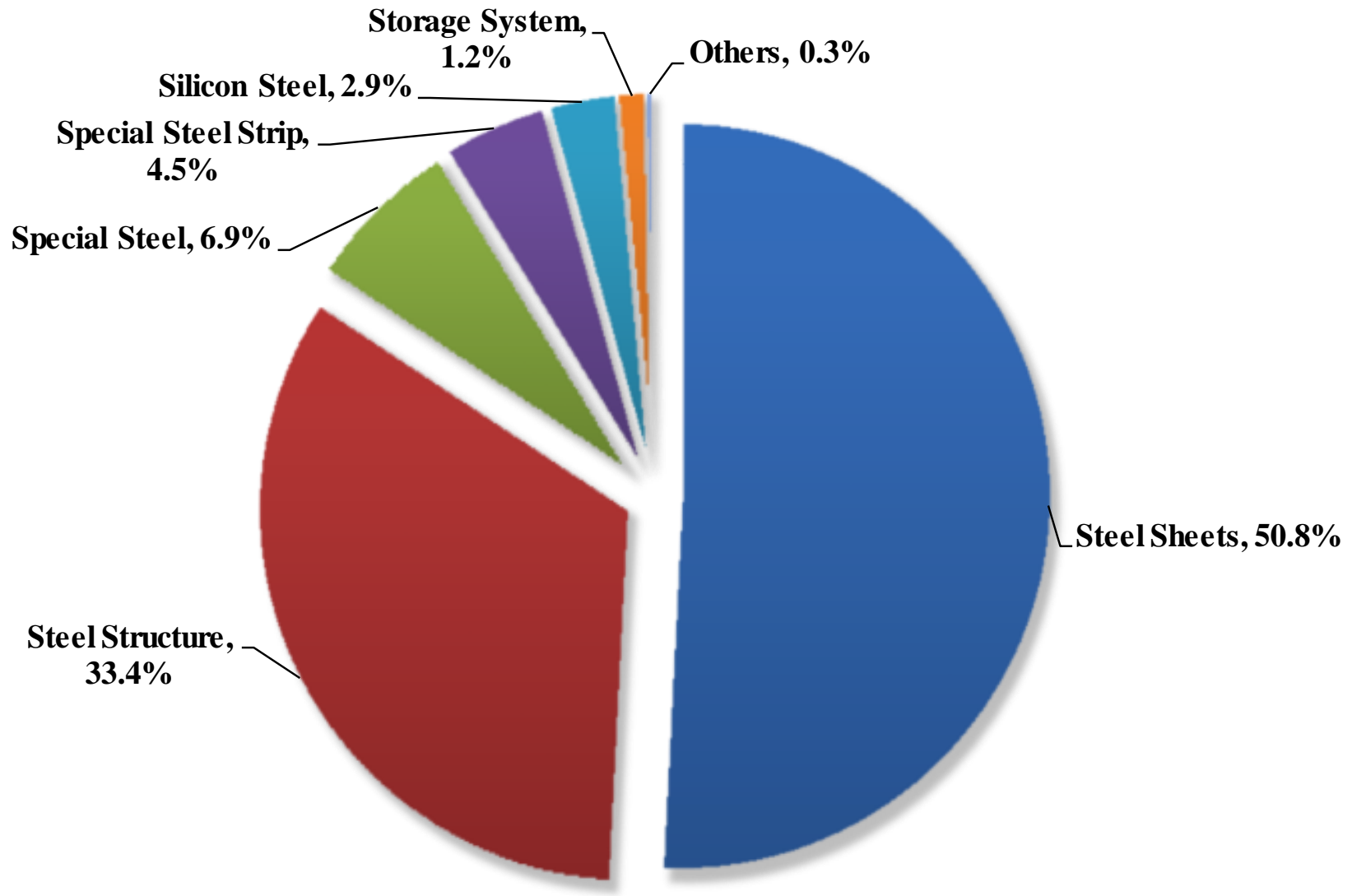
Shanghai Huateng Metal Processing Co., Ltd.

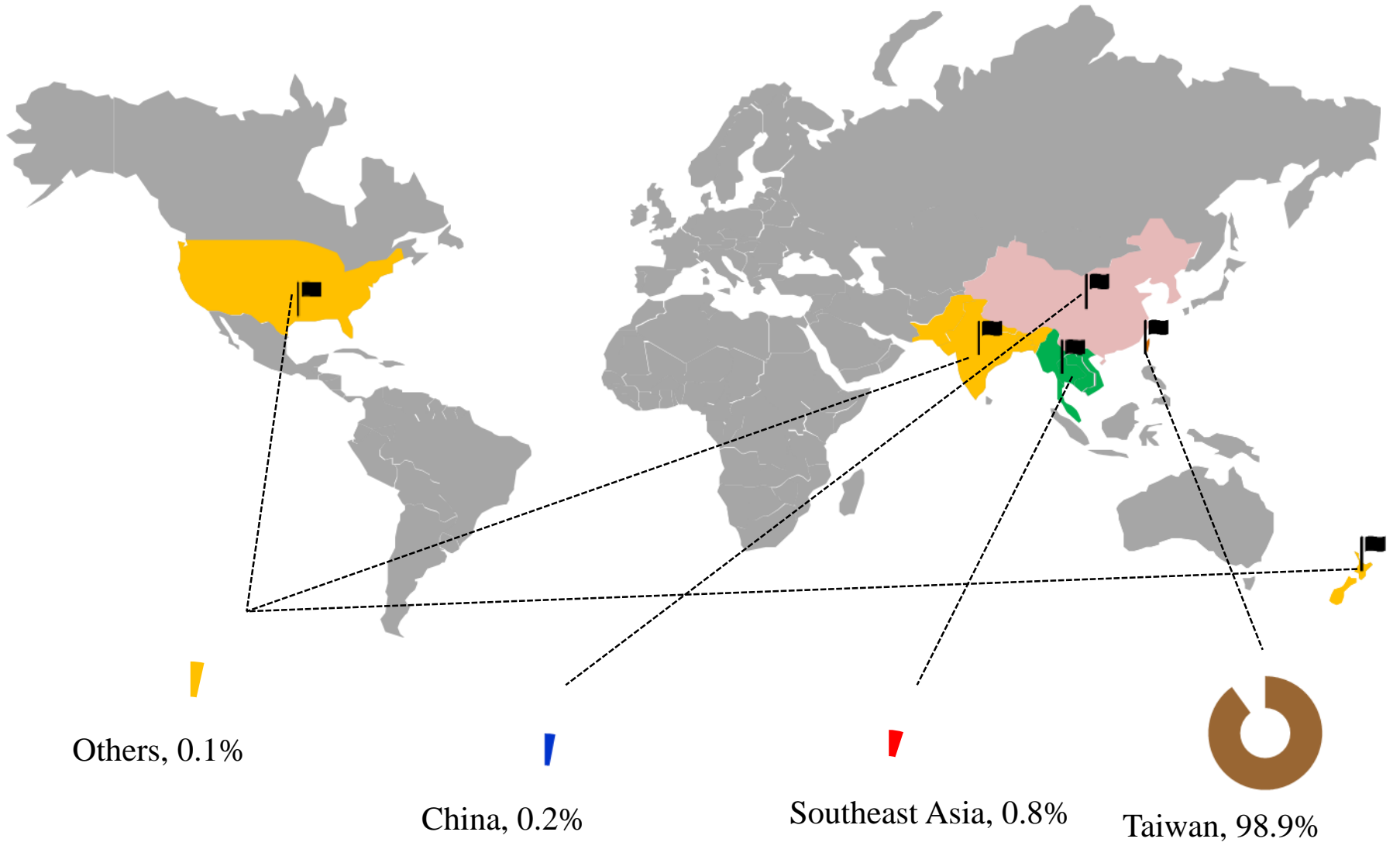


Shenzhen Chun Yuan Steel Industry Co., Ltd.

Shenzhen Hongyuan Metal Industry Co., Ltd.







II、Industry Analysis

Macroeconomic

- GDP
- Taiwan GDP
- PMI
- Crude Steel Production/Steel Demand Forecasts
- TSI Iron Ore CFR China(62% FE Fines) Index
- TSI FOB Australia Premium Coking Coal

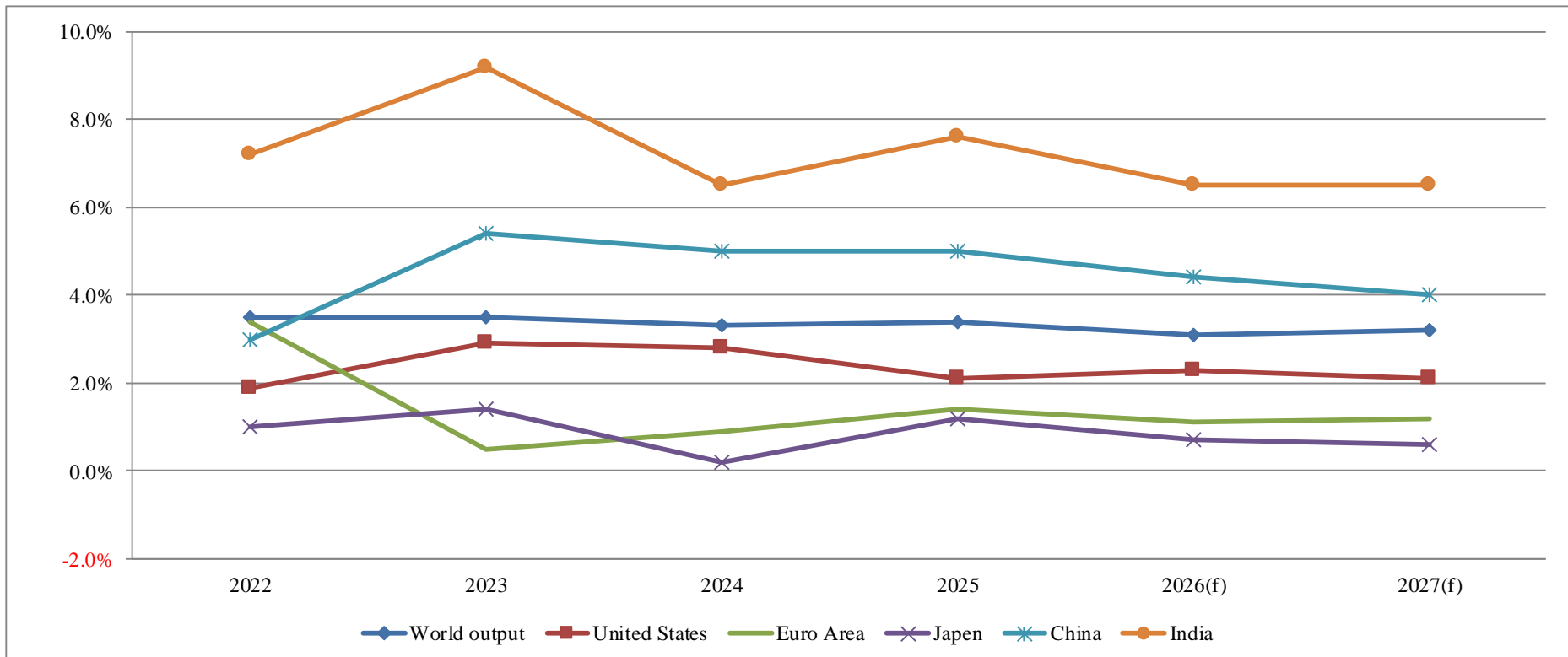
Futures

Market Outlook

- Vehicle
- Machine
- Construction

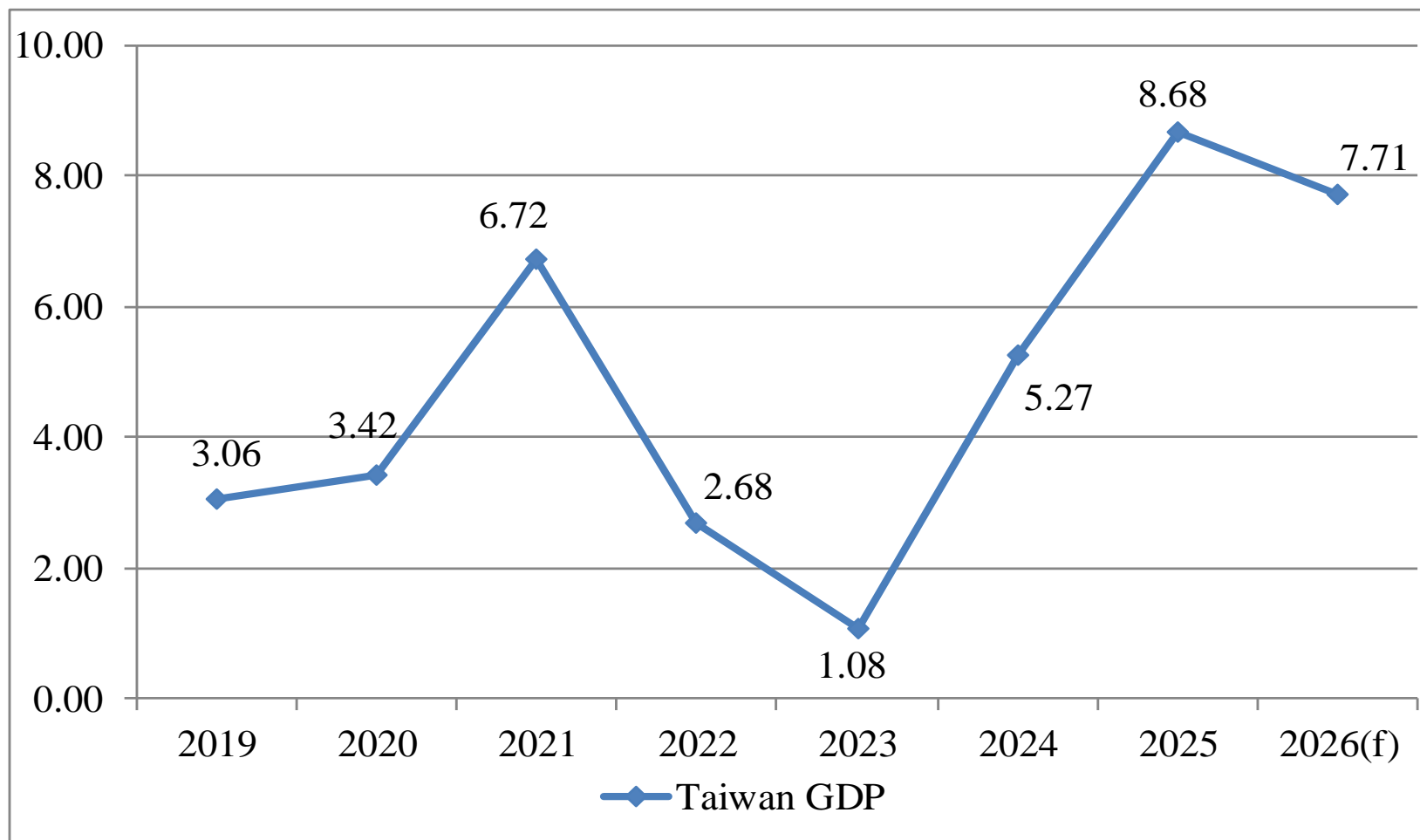
求
新
求
變

拓
展
未
來



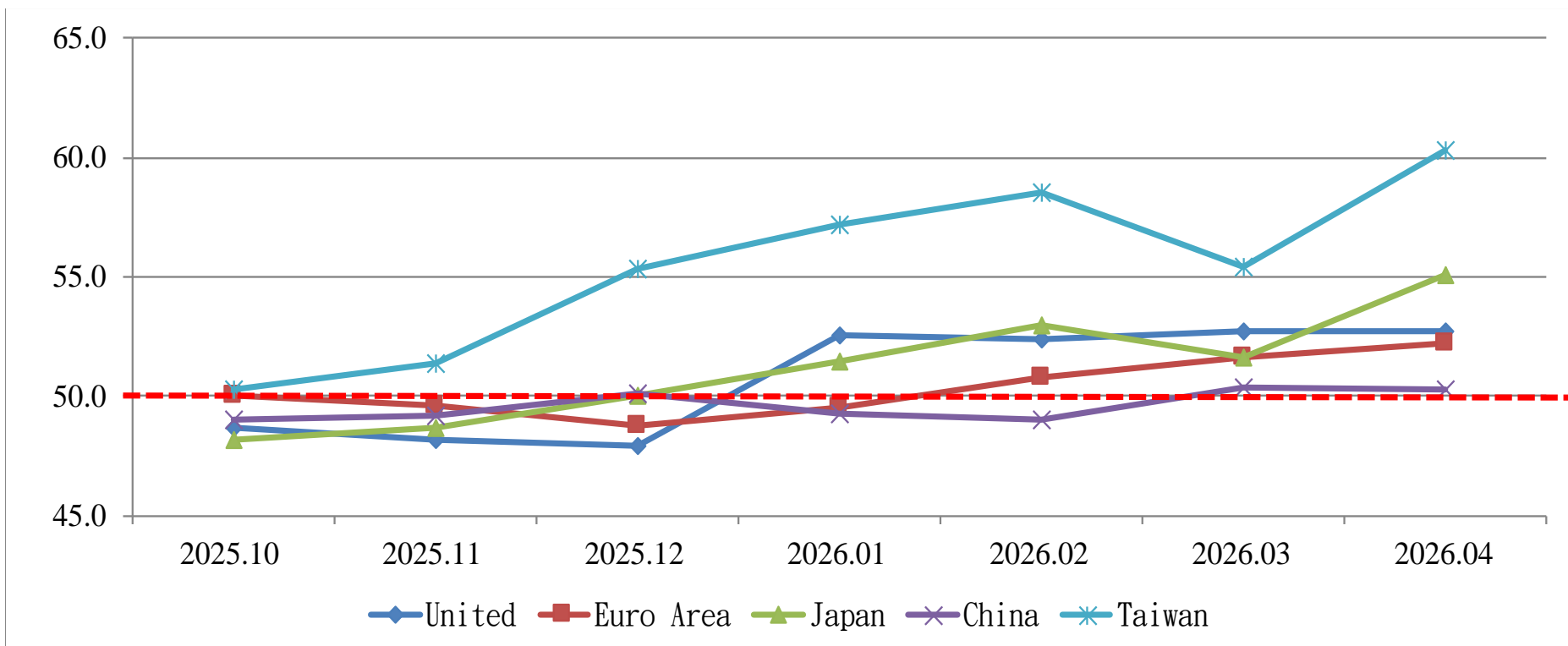
					Projections		Difference from last time	
	2022	2023	2024	2025	2026(f)	2027(f)	2026(f)	2027(f)
World output	3.5%	3.5%	3.3%	3.4%	3.1%	3.2%	-0.2%	0.0%
United States	1.9%	2.9%	2.8%	2.1%	2.3%	2.1%	-0.1%	0.1%
Euro Area	3.4%	0.5%	0.9%	1.4%	1.1%	1.2%	-0.2%	-0.2%
Japan	1.0%	1.4%	0.2%	1.2%	0.7%	0.6%	0.0%	0.0%
China	3.0%	5.4%	5.0%	5.0%	4.4%	4.0%	-0.1%	0.0%
India	7.2%	9.2%	6.5%	7.6%	6.5%	6.5%	0.1%	0.1%

Macroeconomic – Taiwan GDP



	2019	2020	2021	2022	2023	2024	2025	2026(f)
Taiwan GDP	3.06	3.42	6.72	2.68	1.08	5.27	8.68	7.71

Macroeconomic – PMI

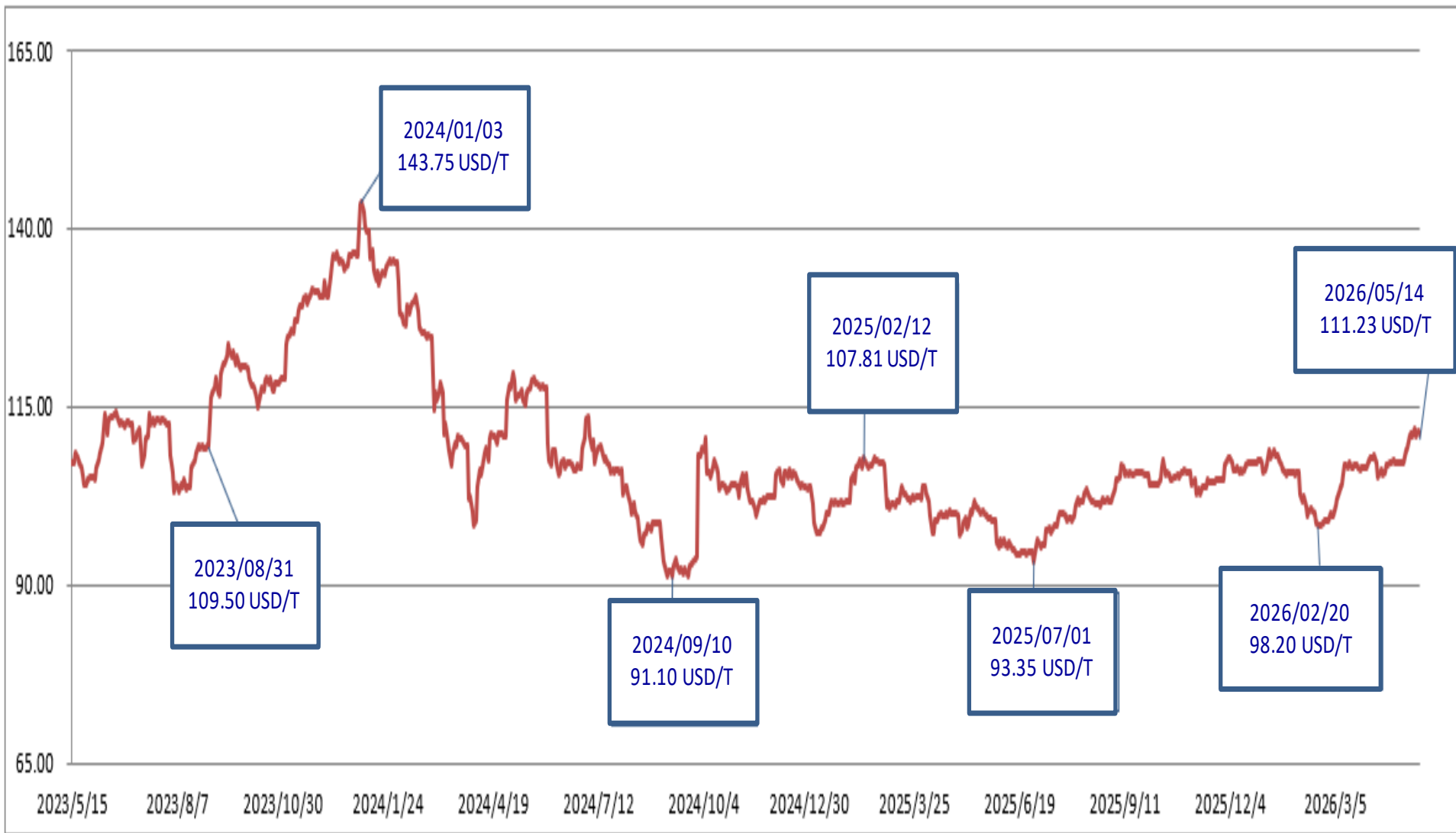


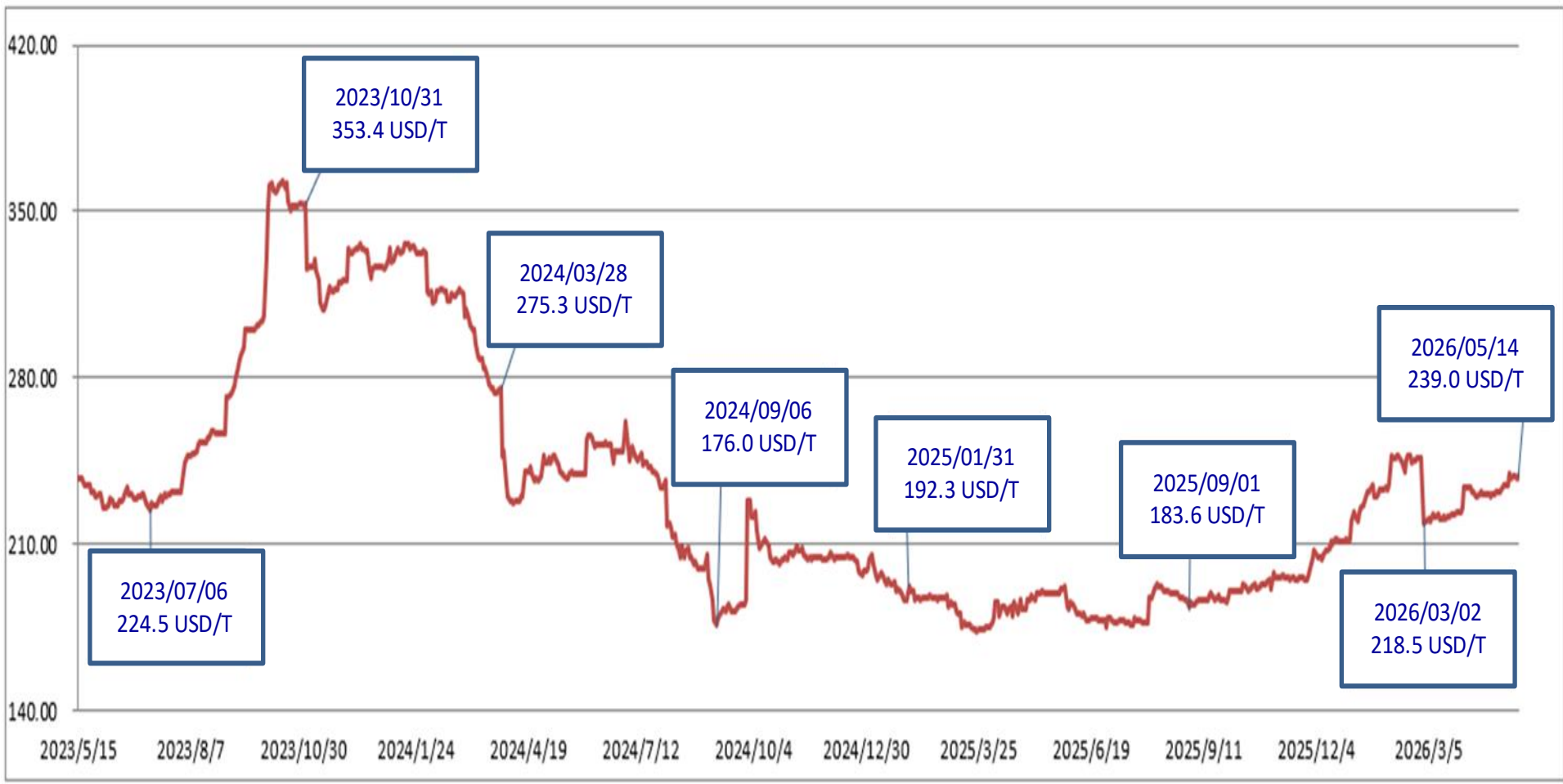
	2025.10	2025.11	2025.12	2026.01	2026.02	2026.03	2026.04
United	48.7	48.2	47.9	52.6	52.4	52.7	52.7
Euro Area	50.0	49.6	48.8	49.5	50.8	51.6	52.2
Japan	48.2	48.7	50.0	51.5	53.0	51.6	55.1
China	49.0	49.2	50.1	49.3	49.0	50.4	50.3
Taiwan	50.3	51.4	55.3	57.2	58.5	55.4	60.3

Units : Million Tons

Regions	2023	2024	2025	2026 (f)	Y.O.Y
World crude steel production	1,897.9	1,870.0	1,860.0	1,870.0	0.5%
World steel demand	1,767.0	1,751.0	1,718.2	1,724.0	0.3%

- The forecast for crude steel production will reach 1,870 Mt in 2026.
- The forecast for steel demand will reach 1,724 Mt in 2026.

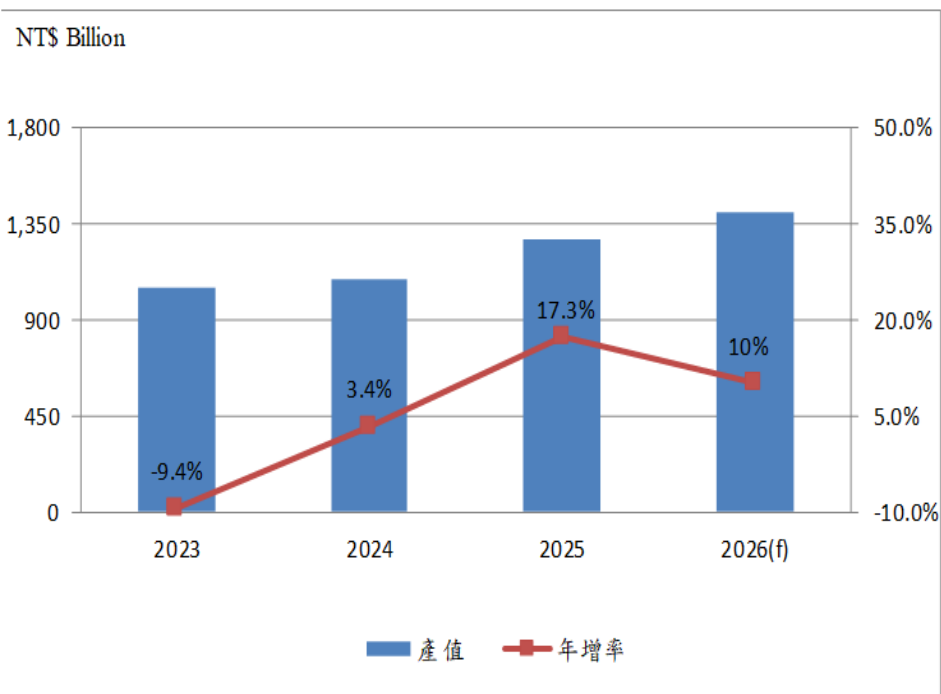




Type	2024	2025	2025		2026		Difference	Difference Rate
			1~4	Market share	1~4	Market share		
Domestic	237,327	212,448	68,436	51.6%	67,619	52.9%	-817	-1.2%
Imported	220,503	201,988	64,301	48.4%	60,222	47.1%	-4,079	-6.3%
Total	457,830	414,436	132,737	100.0%	127,841	100.0%	-4,896	-3.7%

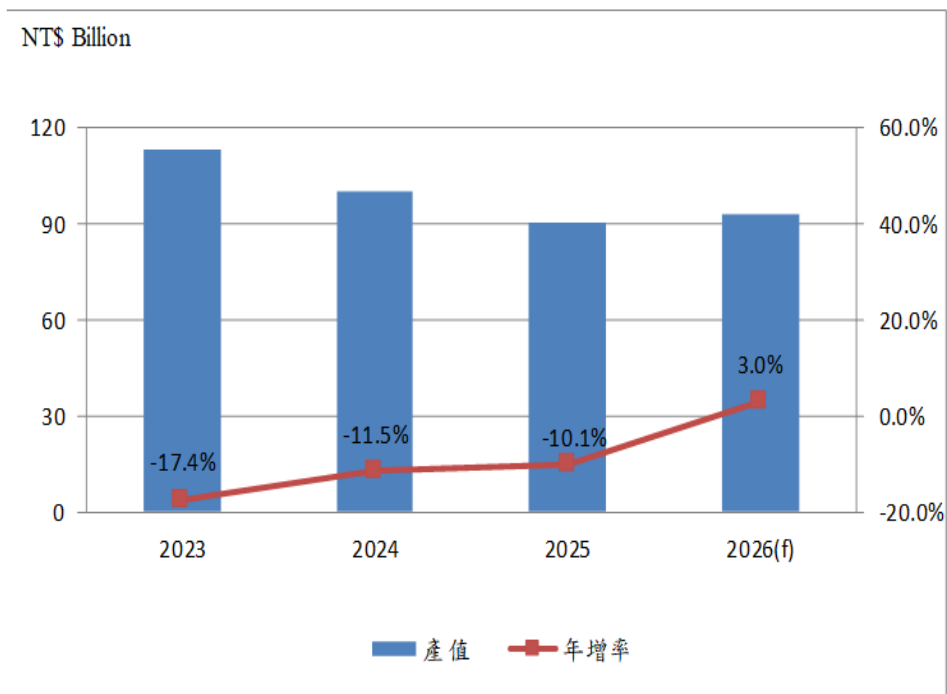
Rank	2024		2025		2026			
					1~4		Difference Rate	Market share
1	Toyota	125,003	Toyota	124,907	Toyota	39,788	-6.2%	31.1%
2	Lexus	28,523	Lexus	28,628	Lexus	9,070	-18.2%	7.1%
3	Honda	26,791	CMC	23,997	Honda	7,989	19.4%	6.2%
4	M-Benz	26,296	Honda	23,569	CMC	7,294	-16.7%	5.7%
5	Hyundai	22,691	M-Benz	22,893	M-Benz	6,097	-34.5%	4.8%
6	BMW	20,332	Hyundai	19,017	Ford	5,970	42.6%	4.7%
7	Others	208,194	Others	171,425	Others	51,633	-	40.4%
Market	Total	457,830	Total	414,436	Total	127,841	-3.7%	100.0%

Taiwan Machinery Industry Output Value Taiwan Machine Tool Industry Output Value



Unit : NT\$ Billion ; %

Main Market	2023	2024	2025	2026(f)
output value	1,047	1,083	1,270	1,397
Y.O.Y	-9.4%	3.4%	17.3%	10.0%



Unit : NT\$ Billion ; %

Main Market	2023	2024	2025	2026(f)
output value	113	100	90	93
Y.O.Y	-17.4%	-11.5%	-10.1%	3.0%

Industry Operating indicates(2025.03)



Domestic Steel Structure Manufacturers: Large steel structure companies continued to deliver strong results in the first quarter this year. Their order books remain at high levels; Chun Yuan Steel’s structural engineering division has more than 200,000 tons of orders on hand, and its order capacity for this year is already fully booked.

III 、 Operational Performance

Consolidated Balance Sheets

Consolidated Statements of Comprehensive Income

Operating Performance Analysis

-Financial Ratio Analysis

-Financial Ratio Analysis (2026Q1)

Profitability Analysis

-Financial Ratio Analysis

-Financial Ratio Analysis (2026Q1)

Financial Review

Historical EPS and Dividends Paid

群
策
群
力

追
求
目
標

Consolidated Balance Sheets

Unit: NT\$ thousand

	2026Q1		2025Q1	
	Amount	%	Amount	%
Current assets	15,350,374	64	16,573,196	68
Non-current assets	8,742,865	36	7,794,649	32
Total Assets	24,093,239	100	24,367,845	100
Current liabilities	9,394,504	39	10,602,601	43
Non-current liabilities	2,236,310	9	1,573,446	7
Total Liabilities	11,630,814	48	12,176,047	50
Total Equity	12,462,425	52	12,191,798	50

Consolidated Statements Of Comprehensive Income

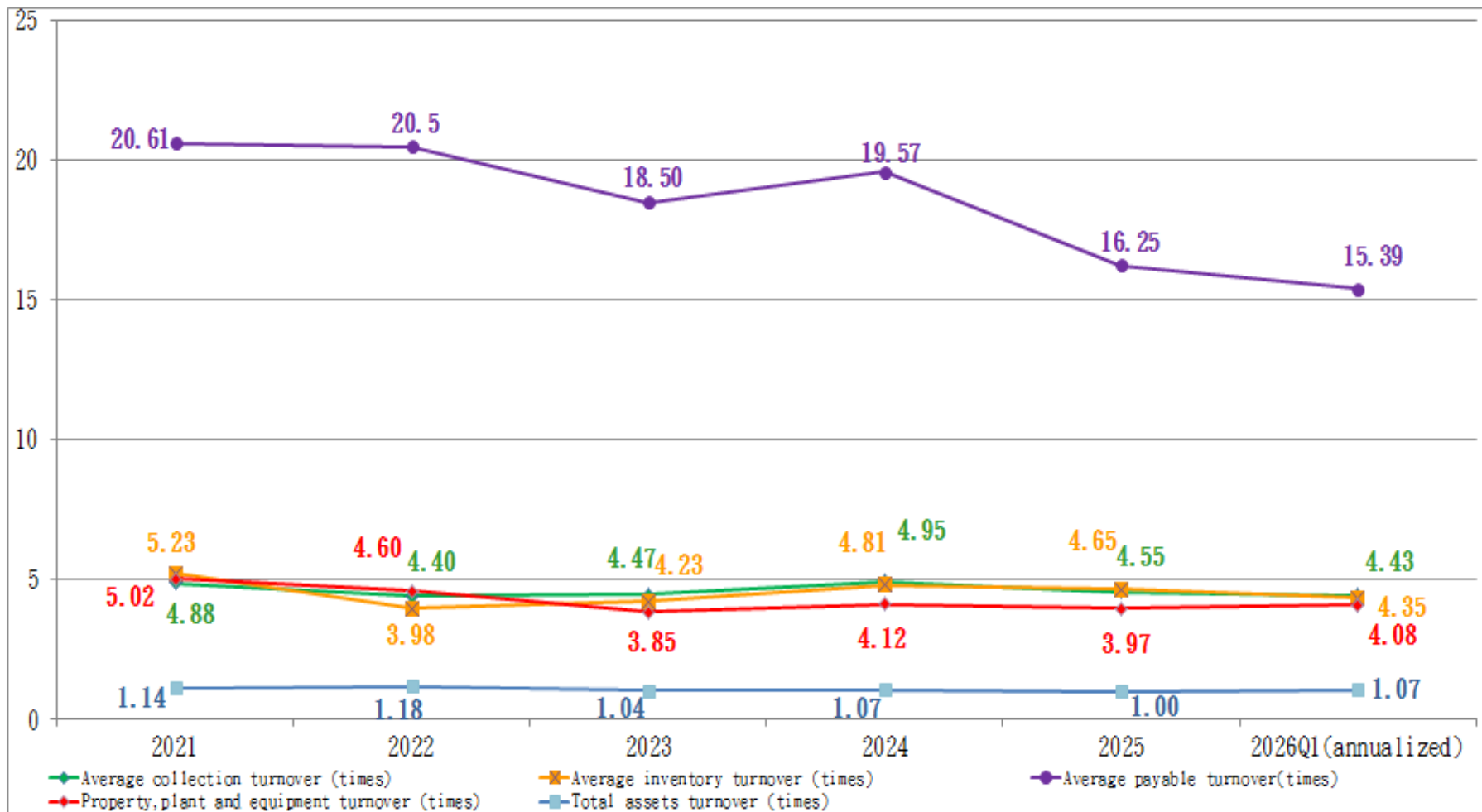
Unit: NT\$ thousand

	2026Q1		2025Q1	
	Amount	%	Amount	%
Revenues	6,434,872	100	5,595,130	100
Gross profit	682,639	11	669,117	12
Operating income	464,114	7	443,488	8
Profit before tax	473,003	7	461,079	8
Profit	374,039	5	365,929	7
Total comprehensive income	466,208	7	394,527	7

1. Revenue increased by 15% compared to last year

2. Total comprehensive revenue increased by 2.2% compared to last year

Operating Performance Analysis

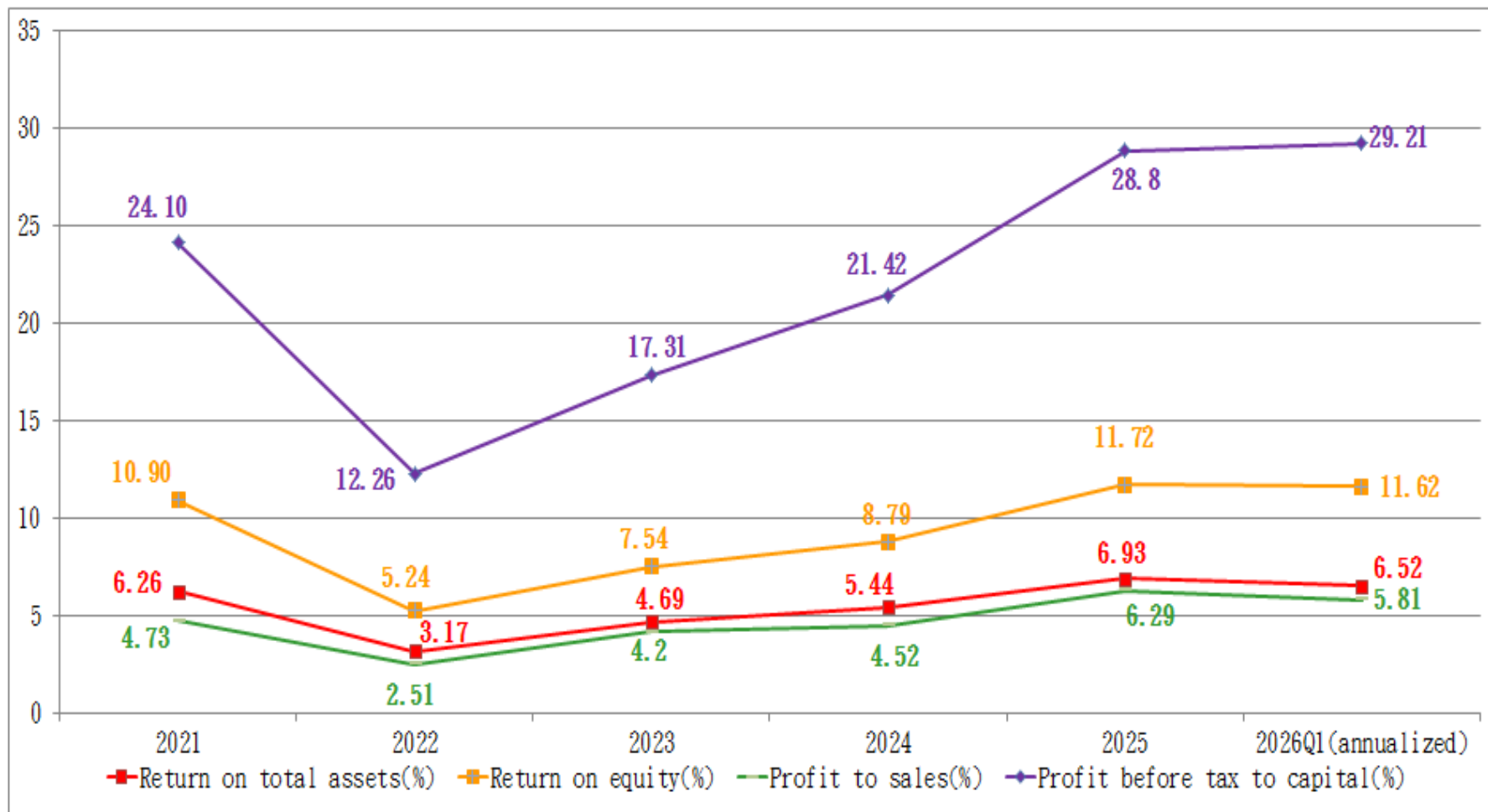


Financial Ratio Analysis

		2026Q1	2025Q1
Operating Performance Analysis	Average collection turnover (times)	4.43 ↑	4.38
	Average collection days	82 ↓	83
	Average inventory turnover (times)	4.35 ↑	4.31
	Average inventory days	84 ↓	85
	Average payable turnover (times)	15.39 ↑	14.72
	Property, plant and equipment turnover (times)	4.08 ↑	3.75
	Total assets turnover (times)	1.07 ↑	0.92

1. Average inventory turnover doesn't include construction-related inventory.
2. The above value have been annualized.

Profitability Analysis



Financial Ratio Analysis

		2026Q1	2025Q1
Profitability Analysis	Return on total assets(%)	6.52 ↓	6.63
	Return on equity(%)	11.62 ↓	11.79
	Profit before tax to capital(%)	29.21 ↑	28.48
	Profit to sales(%)	5.81 ↓	6.54
	EPS(NT\$)	0.57 ↑	0.56

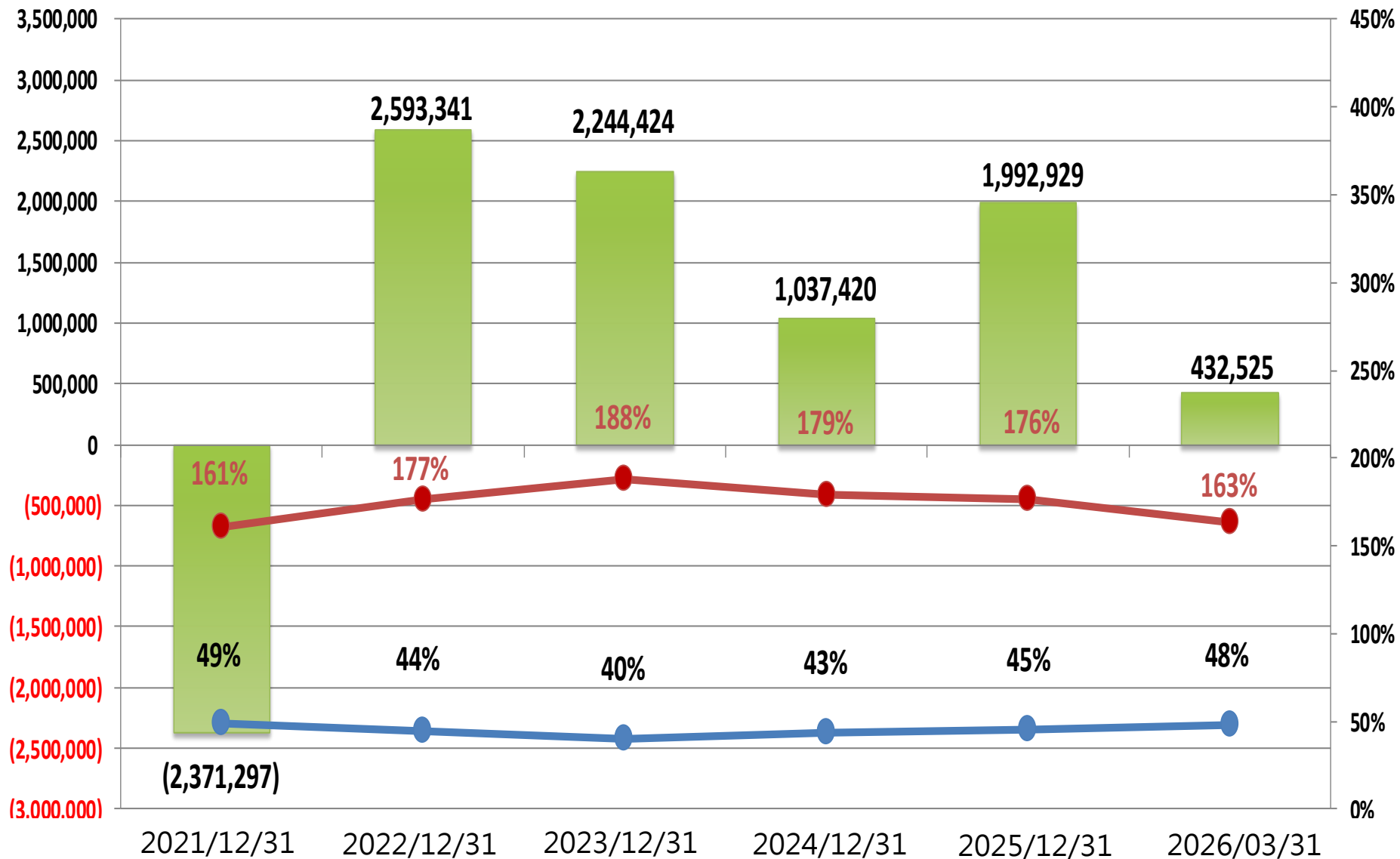
1. Except for EPS, all other value are presented in an annualized basis.

Financial Review

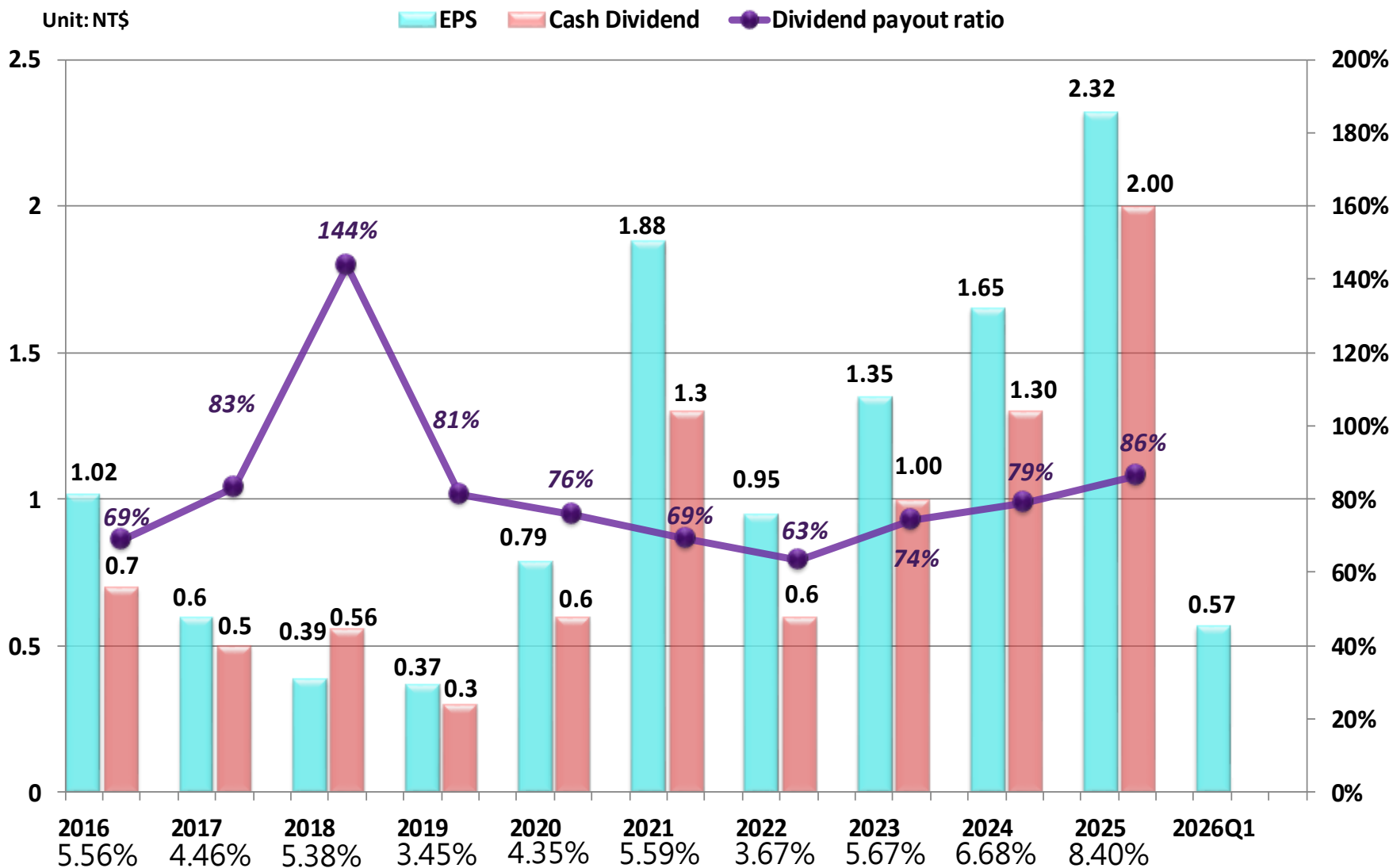
Unit: NT\$ thousand

 CFOs

 Debt Ratio

 Current Ratio


Historical EPS and Dividends Paid



Yield (Based on the closing price on the date of the board meeting.)

IV、Green Energy and Award Achievements

使客戶

得到尊重、服務、滿足

使股東

權益極大化

使員工

生活優質化

Green Energy

-Solar Energy

Awards

Taoyuan Plant Area (Power Generation 487,735 kW)



Kaohsiung Plant Area (Power Generation 505,878 kW)



Tainan Plant Area (Power Generation 205,000 kW)





2025

Ministry of Labor : TTQS Talent Quality-Management System Evaluation (corporate version) Gold Medal.

2024



Ministry of Labor : TTQS Talent Quality-Management System Evaluation (corporate version) Gold Medal.

The Taiwan Continuous Improvement Activity Promotion Association : In the 2024 Taiwan Continuous Improvement Competition, the Unity Group received the Bronze Pagoda Award in the Self-Directed Improvement (Efficiency) category.

Taiwan Steel Industry Association: 2024 Member Factory Progress Award for Safety and Health Management.



2023

Ministry of Labor : TTQS Talent Quality-Management System Evaluation (corporate version) Gold Medal.

Chun Yuan Steel

Thank you for your time

春源人的信念

我們以誠意、以信心

求新求變，拓展未來。

我們要勤勉，要負責

群策群力，追求目標。

鄭春生